



## BK-S2 firmware updates instructions

When updating the firmware for your device, please pay attention to the following:

1. Install on Windows operating system
2. Please download the firmware and tool program on the PC first. Please do not plug the BK-S2 headset into the PC before perform the update.
3. Do not up-plug the BK-S2 headset during the updating. Remove the headset before the firmware update is complete will cause the headset malfunction, and the headset will need to be returned to the manufactory for repair.

Step 1: Please go to <http://www.openroad.com.tw/support> to download update file and tool program.



#### Firmware

ALOHA	DOWNLOAD ↓
SALUT	DOWNLOAD ↓
BK-D	DOWNLOAD ↓
BK-T1	DOWNLOAD ↓
BK-S2(V3.01_C1 2021/07/29)	DOWNLOAD ↓

#### Tools

BK-T1 Tool Program V1.07	DOWNLOAD ↓
BK-S2 Tool Program V1.00	DOWNLOAD ↓

#### Privacy Policy

Privacy Policy	DOWNLOAD ↓
----------------	------------



#### Firmware

ALOHA	DOWNLOAD ↓
SALUT	DOWNLOAD ↓
BK-D	DOWNLOAD ↓
BK-T1	DOWNLOAD ↓
BK-S2(V3.01_C1 2021/07/29)	DOWNLOAD ↓

#### Tools

BK-T1 Tool Program V1.07	DOWNLOAD ↓
BK-S2 Tool Program V1.00	DOWNLOAD ↓

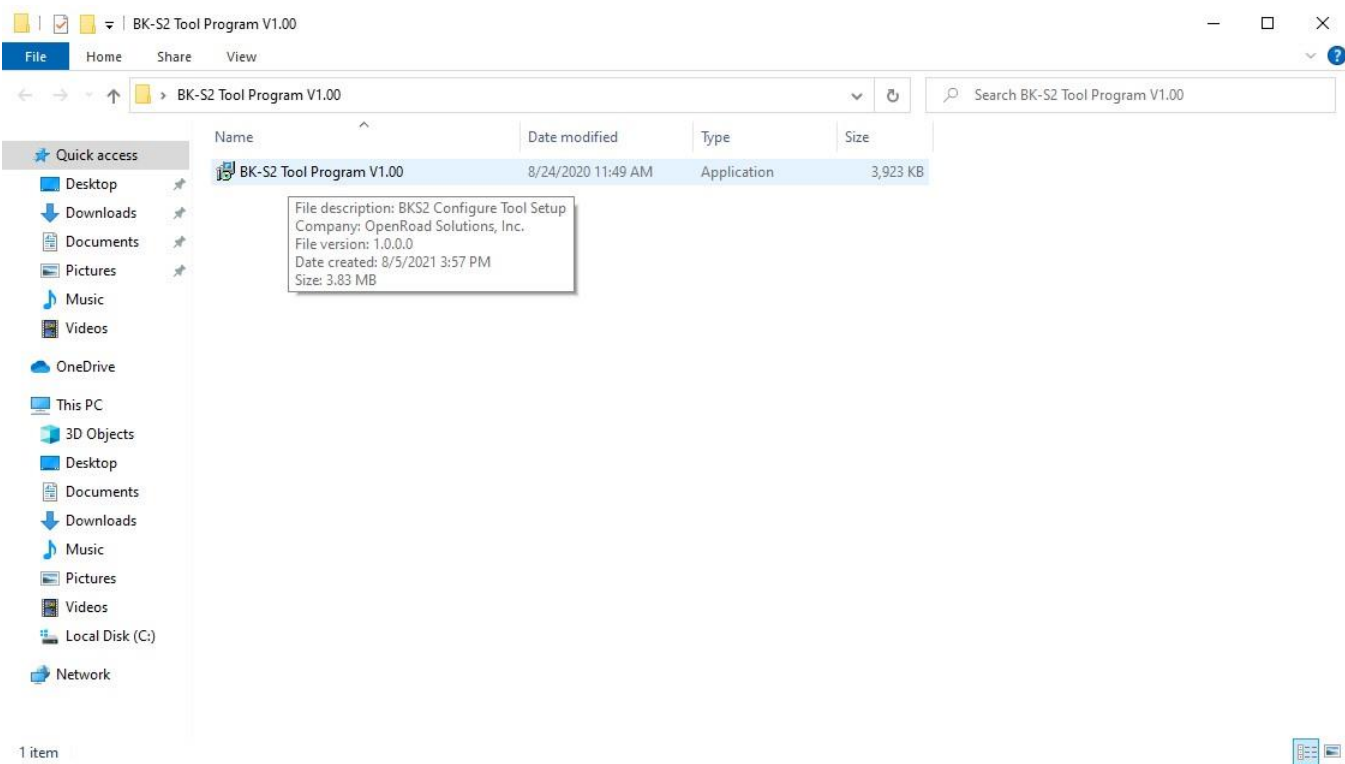
#### Privacy Policy

Privacy Policy	DOWNLOAD ↓
----------------	------------

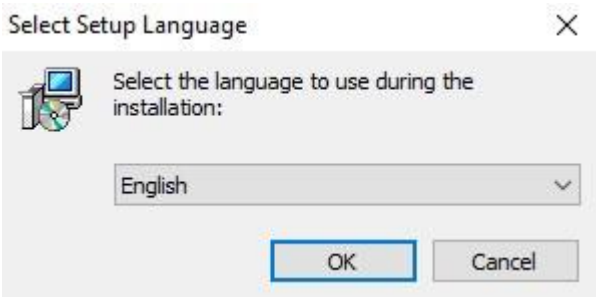
Step 2: Unzip the downloaded compressed files.



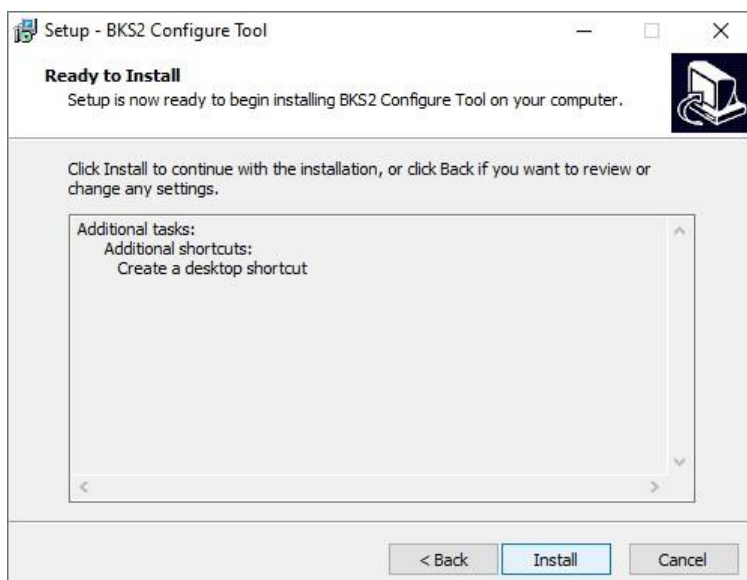
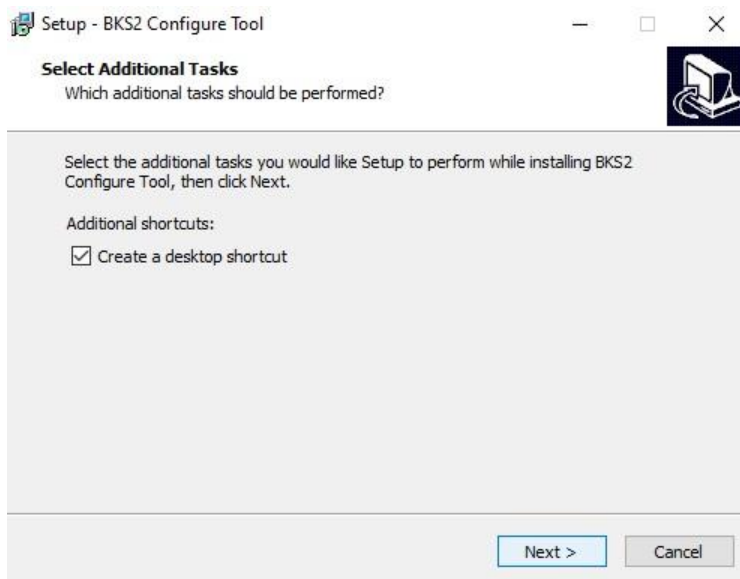
Step 3: Install BK-S2 Tool Program.



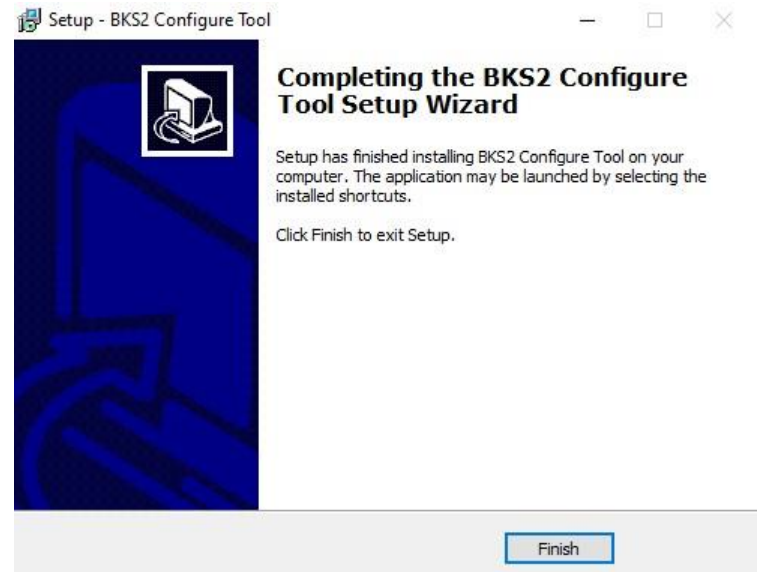
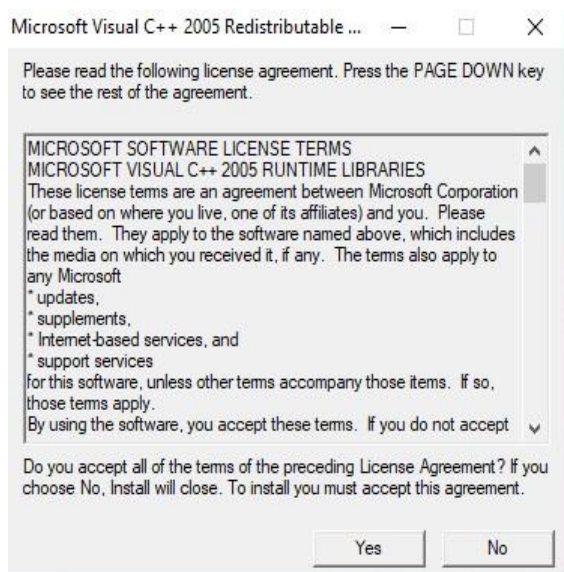
Step 4: Select Setup Language.



## Step 5: Select “Next” & “Install”.



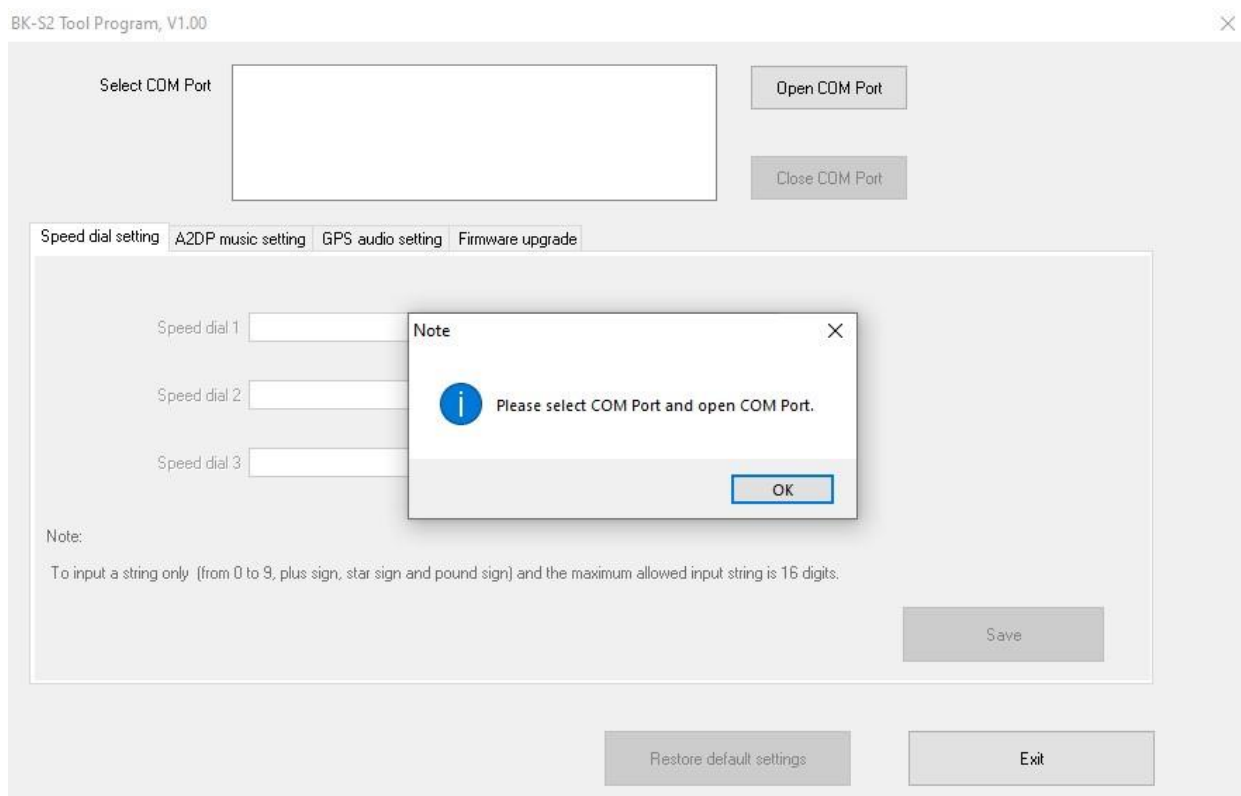
Step 6: Select "Yes" & "Finish".



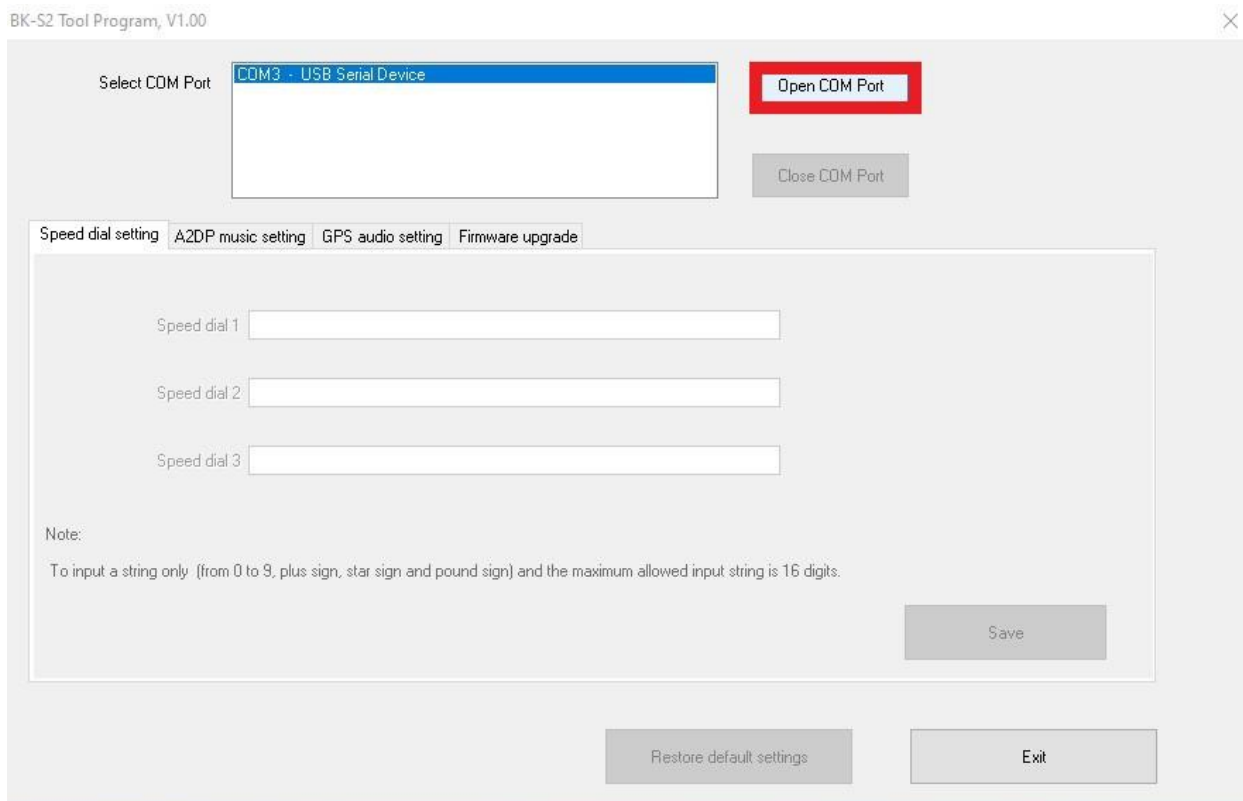
Step 7: Find the "BKS2 Configure Tool" icon on the desktop and click to open the program.



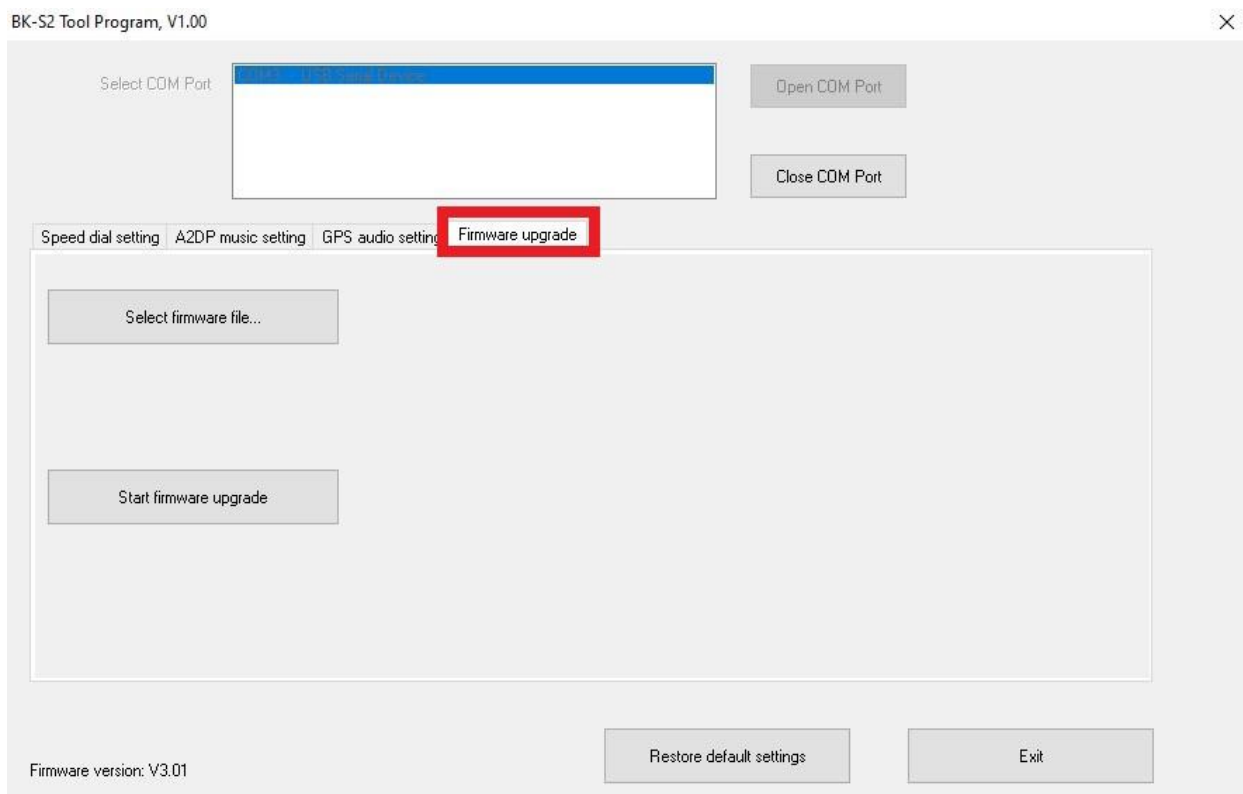
Note: If you did not plug the BK-S2 device, you will be asked to select COM Port and open COM port.



## Step 8: Open COM Port.



## Step 9: Please select “Start Firmware update” tab, “Select firmware file” tab and then choose the latest downloaded firmware.



Select COM Port:

Speed dial setting | A2DP music setting | GPS audio setting | **Firmware upgrade**

C:\Users\DRS\Desktop\BK-S2\_V3.01\_C1\_FW0\BK-S2\_V3.01\_C1\_FW0.dfu

Firmware version: V3.01

**BK** Open ✕

Look in:

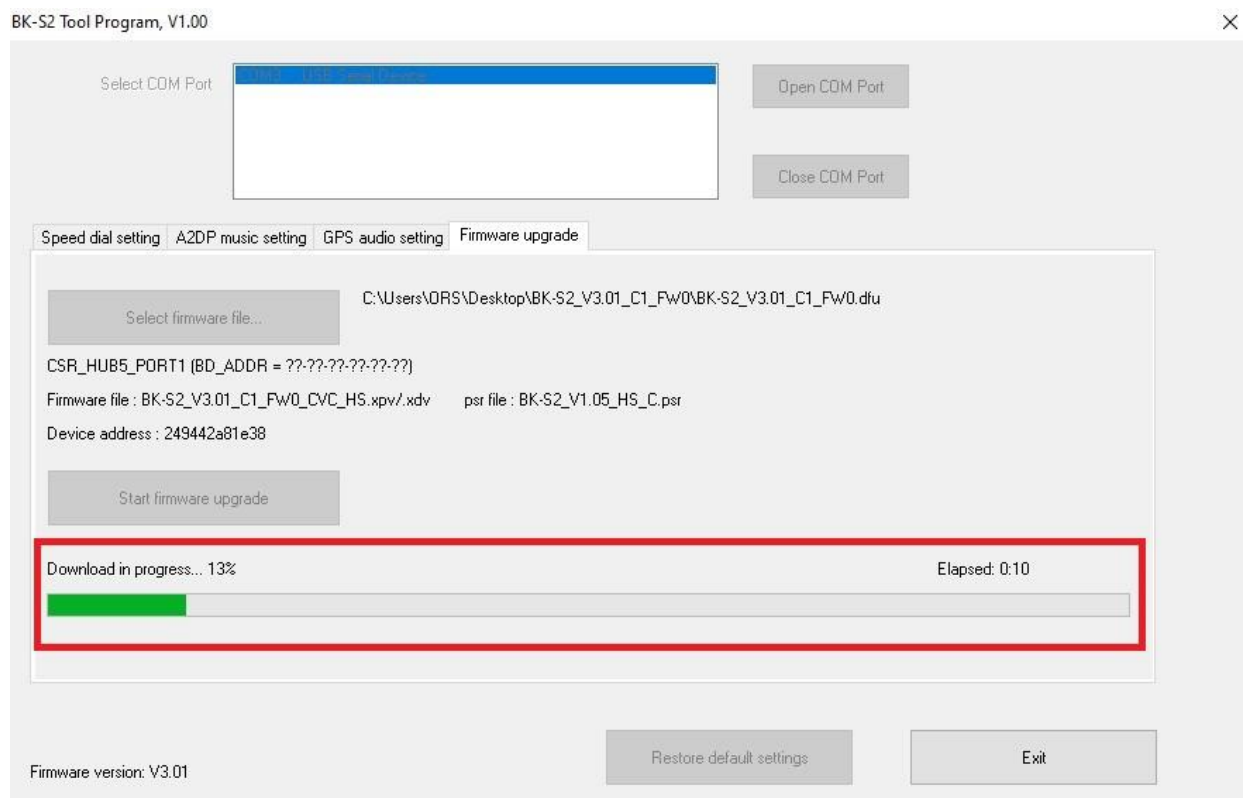
Name	Date modified	Type
BK-S2_V3.01_C1_FW0.dfu	7/23/2021 4:14 PM	DFU File

Quick access: Desktop, Libraries, This PC, Network

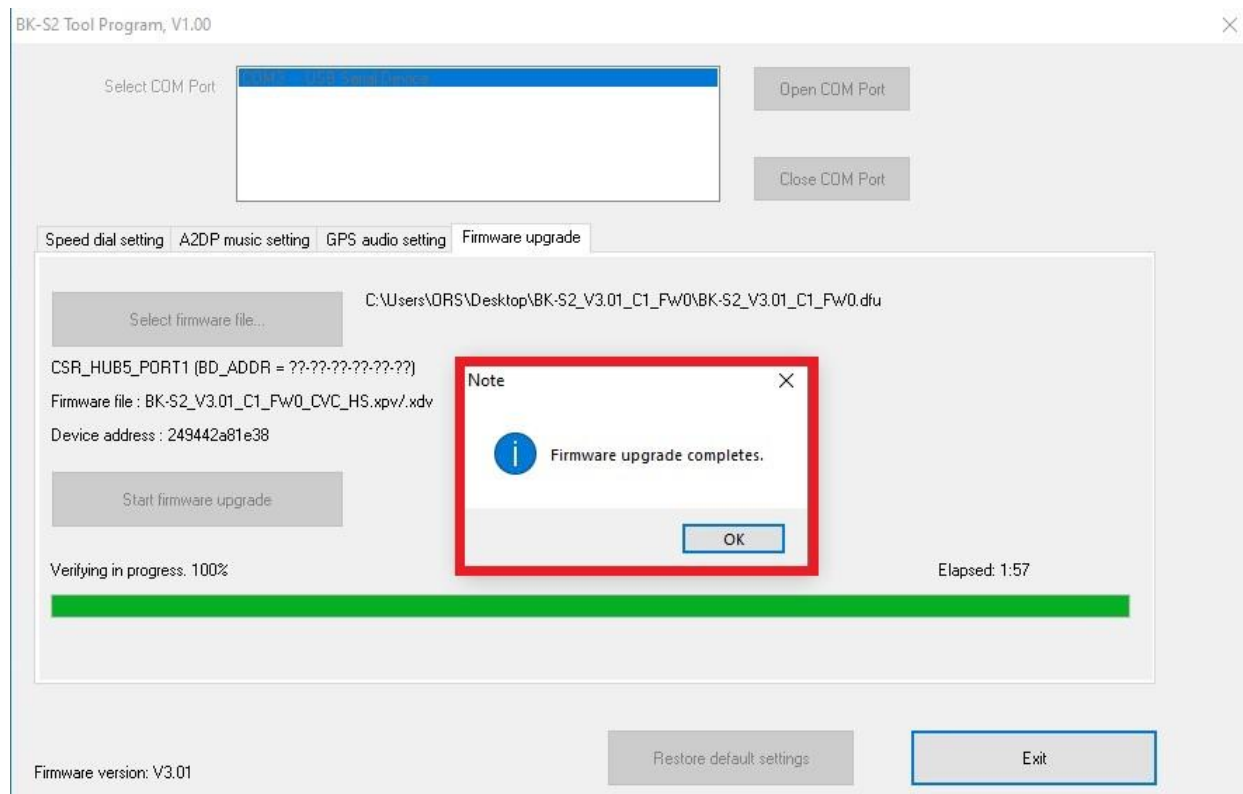
File name:

Files of type:

## Step 10: Download in progress.



## Step 11: Firmware upgrade completes.





## Step 12: Exit.

